

IP-AN230A

Mini-ITX Intel Atom™ 230 Industrial Motherboard with CRT, LCD and GbE LAN



◀ **New!!**

Feature

- Cost-affordable with Onboard Intel Atom 230 Processor
- Memory support DDR2 533/667 MHz up to 2G
- 5 X RS232 ,1 X RS232/422/485 Serial Ports with Power Pin
- 8 X USB 2.0 Ports, 1 X ultra ATA 66/100/133, 2 X eSATA 300MB/s
- 5.1 Channel , 18 bit LVDS

System

CPU	Intel Atom™ 230 (1.6GHz) FSB533MHz soldered onboard
Memory	1 x 200-pin dual channels DDRII SO-DIMM 533/667MHz up to 2GB
Chipset	Intel 945GC + ICH7
BIOS	AMI Flash BIOS
Storage	1 x Ultra ATA 66/100/133, support 1 device 2 x Serial ATA ports with 300MB/s HDD transfer rate
Watchdog Timer	1 ~ 255 level reset

I/O

Serial Port	5 x RS-232 ports 1 x RS-232/422/485 selectable port
Parallel Port	SPP/EPP/ECP mode
USB Port	8 x USB 2.0 ports
KB/MS	1 x PS/2 Keyboard and Mouse
Expansion Bus	1 x PCI slot

Ethernet

Chipset	1 x Realtek RTL8111C 10/100/1000 base-T Ethernet LAN
----------------	--

Audio

Codec/Interface	Realtek ALC662 HD Codec, support Mic-in/Line-in/Line-out Support 5.1 channel and 1 x 3-pin (4-1) header for SPDIF output
------------------------	---

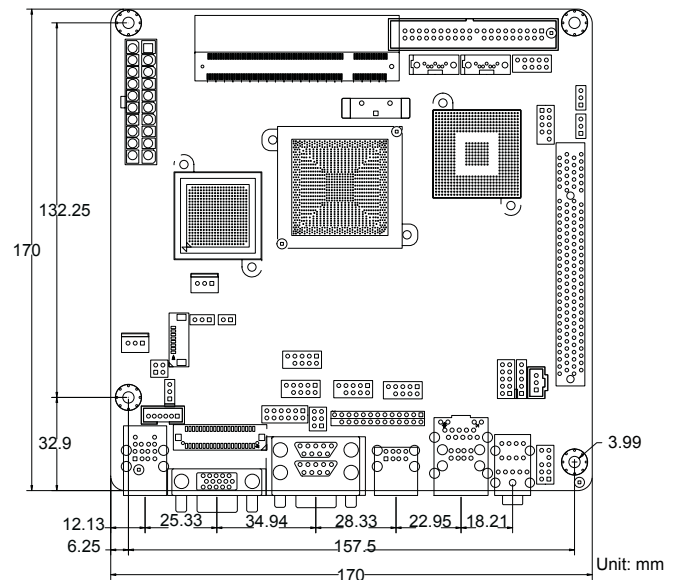
Display

Graphics Chip-set	Integrated with Intel Graphics Media Accelerator (GMA950), shared system memory up to 224MB
Graphics Interface	CRT support up to 2048 x 1536 LCD support 18-bit LVDS

Mechanical & Environmental

Power Type	20-pin ATX type
Operating Temp.	0 ~ 60°C (32 ~ 140°F)
Operating Humidity	0 ~ 90% (non-condensing)
Dimensions (L x W)	170 x 170 mm (6.7" x 6.7")

Dimensions



Ordering Information

IP-AN230A

Mini-ITX Intel Atom™ 230 industrial motherboard with CRT, LCD and GbE LAN.