

IP-4M9653

3.5" Intel Core™ Duo/Core™ 2 Duo Embedded Board with CRT/LCD, Audio and Dual Giga bit LAN

Features:

Intel Mobile Core™ Duo Process or up to FSB 800MHz

1 x 200 pin SO-DIMM up to 2GB DDRII SDRAM

CRT, 24/48 bit LVDS, Dual Independent Display

2 x Realtek 8111B Giga bit LAN

2 x SATA II 300MB/s, 6 X USB 2.0

1 x RS-232, 1 x RS232/422/485

1 x Mini PCI, 1 x Compact Flash Type II



Specifications:

Processor:

Intel® Mobile Merom™ processor
Support Socket P for Merom DC, SC processor with FSB 800MHz

Core Logic:

Intel® 965GME + Intel® ICH8M chipsets

BIOS:

Award BIOS supports 4MB Flash BIOS

Front Side Bus Speed:

800 MHz

Memory:

1 x 200-pin SO-DIMM, support 2GB DDR533/ 667MHz DDRII SDRAM

Onboard VGA Controller:

VGA integrated in Intel GME965
Support CRT/LVDS, Dual Display

LAN Controller:

2 x Realtek RTL8111B 10/100/1000 base-T Ethernet

Onboard EIDE:

1x EIDE channel for PIO mode, DMA mode
1x Compact Flash Type II socket

Flash Disk

1x Compact Flash Type II socket

Multi I/O:

1x Floppy disk port share with parallel port
2x COM RS-232/422/485 ports
6x USB 2.0 compliant
1x PS2 K/B and Mouse

Audio:

Realtek ALC888 HD Audio Code, support Mic-in/Line-in/Line-out

Onboard Serial ATA:

2x S-ATA ports, support data transfer rates up to 300MB/s

USB:

Onboard 2 x USB2.0 ports 4 x pin-header

WatchDog Timer:

256 Level Reset

Environments:

Operation temperature: 0°C to 60°C (32° F to 140° F)
Storage temperature: -20°C to 80°C (-68° F to 176° F)
Relative humidity: 10% to 95% (Non-Condensing)

Certification:

CE, FCC pre-scan approval

Form Factor:

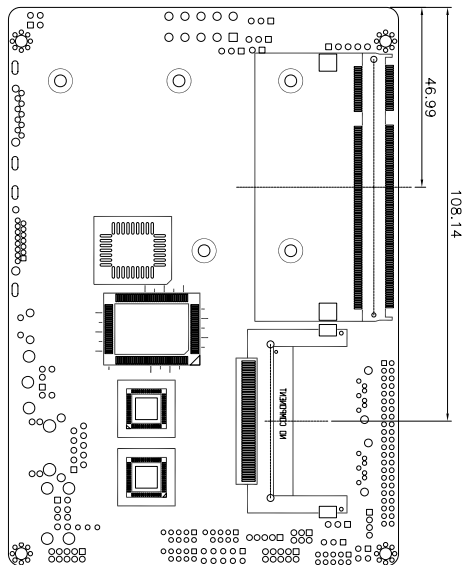
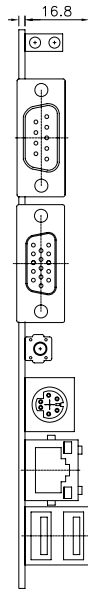
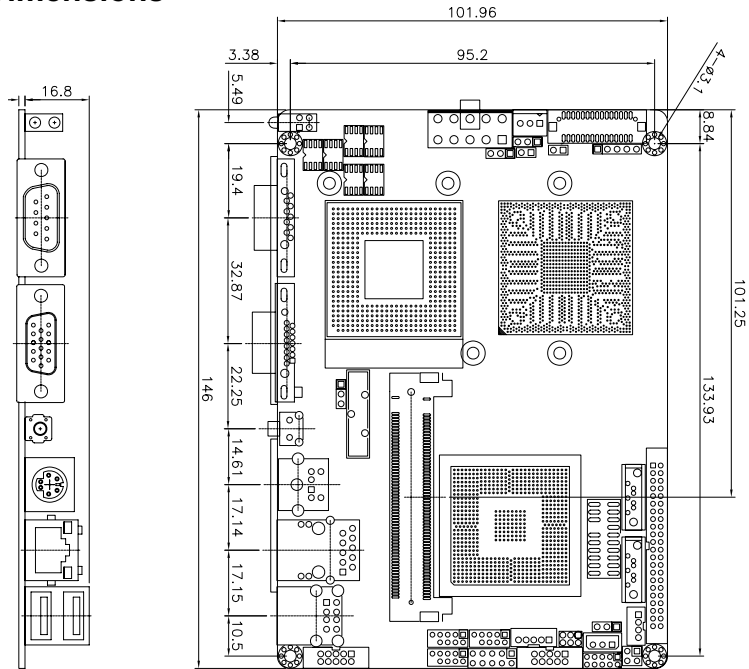
3.5" Embedded board

Dimensions (L x W):

5.7" x 4" (146mm x 102mm)

*Specification is subject to change without prior notice

Board Dimensions



Unit:mm